

INTERNATIONAL COLLEGE OF LIBERAL ARTS

# STUDENT GUIDE 2027



## CONNECT WITH US

- iCLA (International College of Liberal Arts)
- icla.ygu
- icla.ygu
- icla-ygu
- icla\_ygu
- iclajapan

*International College of Liberal Arts (ICLA)  
Yamanashi Gakuin University*

Address: 2-4-5 Sakaori, Kofu,  
Yamanashi 400-8575 Japan

TEL: +81-55-224-1350

General Inquiries: [icla.contact@c2c.ac.jp](mailto:icla.contact@c2c.ac.jp)

Admission Inquiries: [i.admission@c2c.ac.jp](mailto:i.admission@c2c.ac.jp)

[www.icla.ygu.ac.jp](http://www.icla.ygu.ac.jp)

\*The information in this brochure is accurate as of June 2026  
and is subject to change.

# CONTENTS

Life in Japan	3
iCLA & YGU	4
Academics	5
Major Areas of Study	6
Electives Courses	8
Global Partners	9
Student Life	10
Career Support	12
How to Apply	14
What Happens Next?	15



# LIFE IN JAPAN



## AT A GLANCE

**9:1** STUDENT TO FACULTY RATIO

**60+** NATIONALITIES

**OVER 89%** OF FULL TIME FACULTY MEMBERS EDUCATED OVERSEAS

**OVER 80%** FULL TIME INTERNATIONAL STUDENTS

**55+** PARTNER UNIVERSITIES

**90 MINUTES** FROM CENTRAL TOKYO

*The International College of Liberal Arts is located in Kofu City, the capital of Yamanashi Prefecture, Japan.*

Japan is an increasingly popular study destination because of its high standard of education, safe environment, unique cultural heritage, ongoing efforts to globalize, and welcoming support for international students. Japan's capital Tokyo is the most populous city in the world and consistently at the forefront of many cutting-edge developments in fashion, technology, and design. As Japan is one of the leading economies in Asia, with Japanese companies active across the world, gaining a degree from a Japanese university sets you up for a great career world-wide. International students in Japan have generous allowances for part-time work, allowing them to gain hands-on experience of Japanese corporate culture.

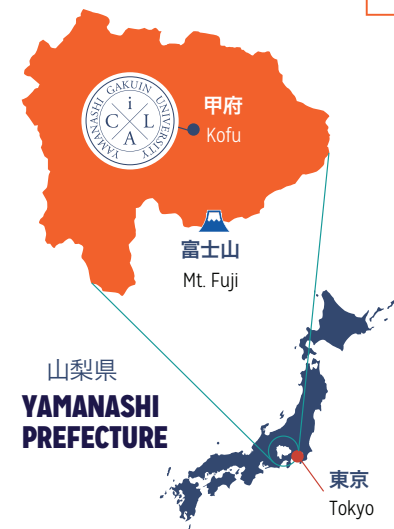
Conveniently located just a 90-minute train ride from the center of Tokyo, Yamanashi has many things to see and do. Yamanashi is most famous for being the home of Mount Fuji, and there is no better view of Mount Fuji than from the Fuji Five Lakes area. The abundance of nature and its sunny climate make Yamanashi ideal for outdoor activities like hiking, cycling, or running. The picturesque landscapes of Yamanashi are the perfect location to enjoy the varied beauty of Japan's four seasons. If you prefer other leisure activities, many events like craft markets, cultural parades, and fireworks festivals are held throughout the year.

Whether it is delicious food, exciting activities, or unique events that interest you, there is something for everyone in Japan. Merging the ancient and the modern, from its bustling metropolises to its serene natural spaces, the enduring allure of Japanese cuisine, art and culture continues to delight and fascinate generations of visitors to Japan's shores. Come and experience it all for yourself at iCLA.



**Why study in Japan?**

Here are our top 10 reasons





**Get the latest iCLA news**

Head to our News and Events page for the latest on what's happening at iCLA.

*iCLA offers you a unique opportunity to immerse yourself in Japanese culture while acquiring a contemporary and globally relevant education at our state-of-the-art facilities. We have faculty and staff members from around the world to support students in their academic journey.*

**iCLA**

The International College of Liberal Arts (iCLA at Yamanashi Gakuin University is a four-year liberal arts college where the primary language of instruction is English. Our students can choose from a wide array of courses as part of an innovative curriculum which leads to a bachelor's degree in International Liberal Arts.

**Liberal Arts**

Our unique liberal arts curriculum spans a variety of subjects like social sciences, business and economics, language arts, and data science, to name a few. The wide-ranging spectrum of subjects under liberal arts prepares our students with the essential skills to become well-rounded individuals who think critically, creatively, independently, and globally, and are able to adapt in the workplace and the world.

**Reasons why you should study liberal arts with us:**

- Our curriculum offers a broad foundation while also allowing you to go in-depth in your declared major.
- An interdisciplinary and multidisciplinary approach to education that helps you comprehend multiple viewpoints.
- Small class sizes and close student-faculty interaction offer an environment uniquely suited to nurturing academic excellence and student growth.
- An active learning environment where you are exposed to other viewpoints and encouraged to assess your own.
- A focus on academic skills, including multi-faceted communication and teamwork skills that will help you prepare for future graduate studies and career success, including a heavy emphasis on class participation, academic writing, and development of critical thinking skills.

**YAMANASHI GAKUIN UNIVERSITY**

Established in 1946, Yamanashi Gakuin University is celebrating its 80<sup>th</sup> year of educating exceptional students. Today, it is nationally renowned for achievements in sports and has produced numerous Olympic athletes and coaches. The university student body totals over 4,000 students across the undergraduate and graduate faculties. The language of instruction is Japanese in all faculties except iCLA. iCLA is one of the newest undergraduate faculties of Yamanashi Gakuin University, and it is one of the most diverse programs in Japan, with over 60% international faculty and a curriculum taught in English.

The university offers the following programs:

**Undergraduate:**

- Main Language of Instruction: English
- International College of Liberal Arts (iCLA)
- Main Language of Instruction: Japanese
- Faculty of Law
- Faculty of Business Administration
- Faculty of Health and Nutrition
- Institute of Sport Science

**Graduate**

- Main Language of Instruction: Japanese
- Graduate School of Social Science

*There are many elements that give the iCLA curriculum its unique character. One extremely important factor is our dedication to the interdisciplinary philosophy of liberal arts education.*

A liberal arts education contains both depth and breadth, and you will take courses from a variety of disciplines while acquiring a thorough understanding of your chosen major and minor.

Positive elements of a liberal arts education include the development of critical thinking, collaboration, communication, and creative problem-solving skills, all of which provide a well-rounded college education. Our students' learning experiences are further enhanced by the small student-to-instructor ratios at iCLA, allowing for better quality education, close interaction between students and faculty, and more acute attention to student progress.

iCLA's faculty are a diverse group of qualified scholars and experts from around the world who are passionate about providing you with a first-rate education that will prepare you for success in the global workplace.

The faculty are experts in their respective fields and are active contributors to globally relevant research. Our professors come from a wide range of backgrounds and cultures, and take pride in providing an inclusive, stimulating and enriching learning environment for all our students.



**Want to know more?**

For full profiles of iCLA's diverse teaching staff, head to our Faculty page.

**STUDY FLOW CHART**

1st Year		2nd Year		3rd Year		4th Year	
Semester 1	Semester 2	Semester 3	Semester 4	Semester 5	Semester 6	Semester 7	Semester 8
Common Curriculum							
Major Studies							
Japanese Language Program						Study Abroad (Optional)	Seminar & GRP*
Electives, Workshops, Internship							

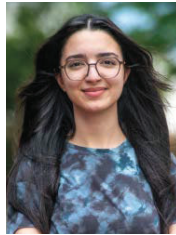
\*GRP: Graduation Research Project

# MAJOR AREAS OF STUDY

## Data Science

iCLA's Data Science major will empower you with vital skills essential for success in the 21<sup>st</sup> century. We offer specialized pathways in Data Science for Finance, Data Science for Psychology, and Data Science for Political Economy. Combining data analytics techniques with domain knowledge trains you to apply your data science skills to real-world use cases throughout your degree, training you for the modern, data driven workplace.

Grounded in a liberal arts education, the field of Data Science goes beyond mere technicalities, fostering critical thinking and problem-solving abilities. Serving as a unifying element, the study of Data Science connects various fields and provides an interdisciplinary perspective to tackle real-world challenges. The curriculum of iCLA's Data Science major is structured to meet the increasing demand for professionals proficient in data analytics, while placing a strong emphasis on ethical data practices.



*"I chose to study Data Science because it changed the way I understand the world. I became interested in how data can reveal patterns behind everyday decisions and explain things that are not immediately visible. In a world where so much is driven by information, I wanted to learn how to interpret it and use it in a meaningful way. What I enjoy most about Data Science is how it connects different fields. I have always been interested in both finance and technology, and this major allows me to explore those interests together rather than separately. It makes my studies feel more relevant and engaging, as I can see how different areas come together through data."*

*"Studying at iCLA has made this experience even more special. The interdisciplinary approach has given me the freedom to explore courses outside my major and discover new interests. Coming from a more structured academic background, I really value this flexibility. It has helped me grow both academically and personally, while also allowing me to meet people from diverse backgrounds and perspectives."*

Hind, Data Science Major from Morocco

## Global Business and Economics

The Global Business and Economics major offers a blend of application and theory, utilizing an applied approach to business to train future leaders who deeply understand the interplay between commerce and society. Our program hones the knowledge and skills associated with the liberal arts and their importance for business, such as communication, ethics, teamwork, critical thinking and an understanding of social, cultural, and geopolitical contexts.

With academic specializations leading to careers in Economics, Finance, International Business, and Marketing, all courses are studied from a global perspective, giving you the ability to leverage your knowledge of Japanese business culture and prepare for a vocation either in Japan or internationally. All three pathways are embedded in a liberal arts approach that stresses taking a humane point of view, criticality, social responsibility, and intellectual depth.



*"Choosing to study Global Business and Economics at iCLA has been one of the best decisions I've ever made. In my first year, like all iCLA students, I had the opportunity to explore a wide range of subjects before declaring my major. I really appreciated this structure because it gave me the time and space to confirm what I truly wanted to pursue. After experiencing different fields, I realized how passionate I was about understanding the global economy and the dynamics of business. That's when I knew Global Business and Economics was the right path for me."*

*"One of the things I love about this major is the diverse selection of courses available—entrepreneurship, marketing, Japanese business and economy, and more. The variety allows students to tailor their learning to their interests. Personally, I'm fascinated by consumer behavior and how economics connects with human psychology. iCLA encourages interdisciplinary learning, so I've been able to combine my major with courses in psychology to deepen my understanding. My academic advisor has been incredibly supportive, helping me shape my research goals and explore new ideas. I'm genuinely happy with my choice of major and grateful for the freedom to explore multiple academic passions."*

Zere, Global Business and Economics Major from Kazakhstan

## Interdisciplinary Arts

Interdisciplinary Arts is an exciting major where our students gather inspiration from multiple sources including visual art (Fine Art and Graphic Design), music (Audio Engineering, and Digital & Sound Art), language arts (Creative Writing, Literary Analysis, and Linguistics), and performing arts (Film and Theater). You will gain a rich understanding of your chosen specialization and work through the medium of a wider creative process by exploring these disciplines from practical, theoretical, and historical perspectives.

If you wish, you can choose to pursue a Japan Studies theme through Interdisciplinary Arts, with courses in Japanese theatre, film, art and crafts, manga, anime, literature, and culture to help you get the most out of this extraordinary country. The interdisciplinary nature of a liberal arts education guarantees that you graduate with the transferable skills valued by employers and required to succeed in any role, in addition to the technical knowledge gained in your artistic field.



*"Despite being a person who was wholly adamant on pursuing arts for my future, I had also loved learning about the sciences too. I had finished my previous studies with a focus on science and technology, and while I wanted to continue studying in a different field, it was something I did not want to fully let go. In essence, I had always been a person who was interested in both the sciences and in the arts. After finding the flexibility and freedom regarding the courses we can choose in iCLA, I had found the university to be an opportunity to do both at the same time."*

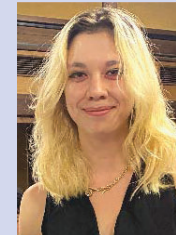
*"In iCLA I chose the Interdisciplinary Arts as my major with a focus on visual arts, all the while taking courses from other fields such as Data Science and Psychology. This kind of freedom has allowed me to explore many different interests while still having the opportunity to pursue my passion, something that I had always sought out since the beginning. This had been my biggest factor in joining iCLA, the freedom to study a variety of fields whilst still having a clear pathway in my education."*

Shakira, Interdisciplinary Arts Major from Philippines

## Japan Studies

Japan Studies endeavors to investigate and deconstruct the intricacies of Japan by providing our students with an avenue to explore the multifaceted nature of this country. Alongside our comprehensive Japanese language program, you can explore Japan's society, contemporary popular culture, literature, history, politics, international relations, and economics. In addition to developing an in-depth understanding of Japan's role in our international world, the major encourages you to investigate broadly across multiple disciplines and fields in order to develop critical thinking and other higher-order skills.

In a true expression of the interdisciplinary nature of iCLA's curriculum, Japan Studies also draws on courses from across our whole curriculum to provide a holistic learning experience. Tailored study plans can lead our graduates to fluency in Japanese language, in addition to career opportunities in mass-media, journalism, banking and finance, tourism, and academia.



Camila, Japan Studies Major from Mexico

*"Japan Studies is not just about looking into a specific area, like history or language, rather it's an immersive experience that opens the door to a new perspective on the world. iCLA's Japan Studies program goes beyond typical narratives, inviting students to explore a multifaceted Japan shaped by a deep historical context and enormous cultural diversity."*

*"This unique perspective has enabled me to challenge the stereotypes I used to have about Japan, while fostering in me a global understanding that goes beyond the common perceptions associated with Japan."*

## Political Science

Questions concerning government policies aimed at achieving economic stability and growth, the gap between the rich and poor, the role of NGOs to affect social and political change, the relations between countries, crises in our democratic institutions, and the path to world peace are all on the research agenda of contemporary political scientists.

Offering academic pathways for students interested in International Relations, Political Economy, and Public Administration, iCLA's Political Science major addresses the fundamental problems facing human society.

Our students leverage the truly interdisciplinary approach that Political Science can offer across a wide range of industries and fields. By integrating data science techniques, quantitative analysis, and diverse research methodologies, you will analyze complex economic policies and their social impacts. This program fosters deep understanding, problem-solving skills, communication skills and teamwork, leading to enriching careers in government, the NGO sector, academia, journalism, and consulting firms.



Synthia, Political Science Major from Cameroon

*"Coming from a conflict-affected country, my passion for Political Science has been driven by a desire to understand conflict and promote its resolution through diplomacy. iCLA has given me the academic freedom to explore research topics in these areas while learning from diverse student perspectives. Taking classes across other majors has deepened my understanding of global politics in an interdisciplinary way."*

*"My recent research project, 'Reforming Governance Structures to Combat malpractices in Cameroon's Civil Service Recruitment' is a testament to how the Political Science Major has challenged and inspired me to pursue deeper inquiry into global issues."*

*"Whether you're just curious, open-minded, or desire to be globally engaged, Political Science at iCLA offers a rich and rewarding academic journey."*

## Psychology

Our Psychology major will equip you with a thorough understanding of how technology influences human behavior across various psychological disciplines such as cyberpsychology, social psychology, consumer psychology, and economic psychology. The interdisciplinary approach at the heart of iCLA's curriculum provides our students with the skills and knowledge needed to thrive in a diverse range of professional settings.

To ensure our students stay up to date with the latest advancements in technology, we integrate hands-on learning experiences and practical applications into the curriculum. By engaging with a variety of tools such as social media platforms, artificial intelligence, virtual reality, and other emerging technologies, you gain practical skills and develop a deeper understanding of how technology can be harnessed to improve psychological research and practice in areas such as consumer behavior, organizational management, and economic decision-making.

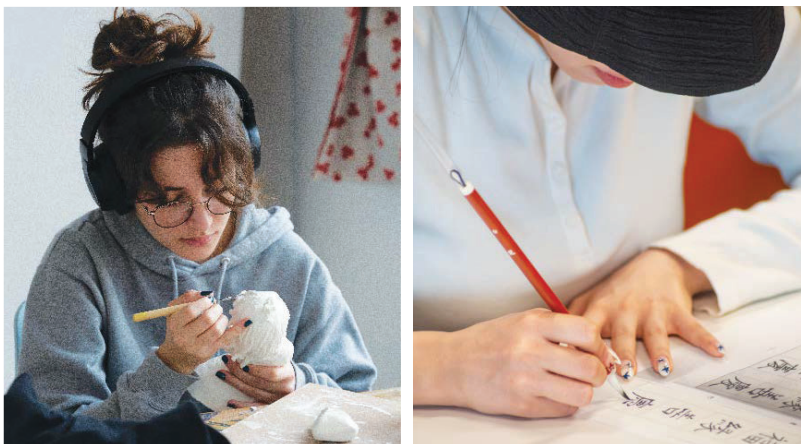


Hao En, Psychology Major from Singapore

*"Humans have always strived to understand the human mind, which is rather ironic considering what drives us to pursue that understanding is our mind itself. Psychology is a social science, and by nature of it being a science, it relies heavily on empirical research to further our understanding of how our mind works."*

*"By combining the interdisciplinary approach of iCLA's curriculum with Psychology, it opens up the possibility of learning how psychology is interwoven into our everyday lives, be it through marketing, economics, data, education, the arts, or even just simply gaining an understanding of the behavior of ourselves and those around us. By majoring in Psychology at iCLA not only will you be able to learn all that, but also learn how the study of Psychology works and how empirical studies allow us to make new discoveries about the complex human mind."*

# ELECTIVE COURSES



## Want to know more?

For full details of the over 150 courses available at iCLA, head to our Curriculum Course List.

*Elective courses supplement academic majors throughout the four years at iCLA, providing the breadth, flexibility, and interdisciplinary nature of true liberal arts education and expanding career opportunities. If you meet the credit and academic requirements from one additional major, you may be awarded a minor in that subject area. We also offer elective courses in:*

### Japanese Language

Our international students have the opportunity to reach a high level of proficiency in Japanese by the time they graduate, even if they join iCLA with little or no Japanese language ability. Courses are divided into seven levels, from beginner to advanced. Our students are able to deepen their understanding of Japanese culture while discussing various cultural and social topics in Japanese.

### Quantitative Reasoning & Natural Sciences

In conjunction with our Data Science courses, these courses nurture scientific inquiry and Quantitative Reasoning to provide the mathematical background required for programming. Our courses in Mathematics emphasize the development of mathematical and quantitative reasoning skills. You will gain an understanding of fundamental, numerical, and quantitative skills and their application to everyday life. The focus will be on applying basic mathematical concepts to solve real-world problems, and to develop skills in interpreting and working with data in order for you to become able to function effectively as professionals and engaged citizens. The course on Earth Science examines planet earth, its nature in terms of its interactions and exchanges between atmosphere, land, living things and physical laws.

### Sociology

These courses aim to develop your understanding of social and cultural identity, and how we have evolved to interact as groups and organizations within societies and cultures. In those courses, you

will examine the evidence and factors that have influenced our behavior from ancient times through to the modern to form conclusions about social phenomena. They also develop basic skills in the scientific method of social research and can identify sociological terms, concepts, ideas, and theories, in fields such as archeology, linguistics, the creation of folklore and myth, modern public policy, and social enterprise and innovation.

Taking advantage of iCLA's proximity to Mt Fuji, our students can attend field trips to study the archeology and folklore of one of Japan's most important cultural and spiritual sites firsthand.

### Health & Physical Education

iCLA's courses in Health & Physical Education include a variety of martial arts. All our Health and Physical Education courses are closely connected to Japanese culture and emphasize integrating the mind and body. Each course is taught by an experienced master of the discipline, all with international recognition. We have a beautiful Dojo at iCLA, and access to some of the best athletic facilities in Japan on the Yamanashi Gakuin University Campus.

### Experiential Learning

Experiential learning courses offer unique opportunities to gain hands-on experience in a range of cultural, practical, and creative areas of study. The Interdisciplinary Arts and Japan Studies majors feature workshops within their relevant disciplines. Among the variety of workshops offered at iCLA, students can experience music, arts, culture, and Japanese martial arts.

# STUDY ABROAD

*iCLA offers you the opportunity to truly expand your world perspective with our Study Abroad Program.*

You can develop leadership skills, versatility, and cultural awareness, all of which are valuable life skills and indispensable in a modern global workplace. We have a network of over 55 partner universities in 27 countries and regions, so you can find an exchange destination that best fits your goals and interests.

All of our study abroad partnerships are based on mutual tuition waiver agreements, so students continue to pay iCLA tuition fees, no matter which country they choose for their study abroad experience.

## GLOBAL PARTNERS

### ASIA

CHINA	■ Beijing Normal - Hong Kong Baptist University
HONG KONG	■ Lingnan University
INDIA	■ O.P. Jindal Global University
INDONESIA	■ BINUS University ■ Universitas Muhammadiyah Yogyakarta
MALAYSIA	■ Taylor's University ■ Universiti Malaya
PHILIPPINES	■ Ateneo de Manila University
THE REPUBLIC OF KOREA	■ Kyung Hee University ■ Myongji University ■ The Catholic University of Korea
TAIWAN	■ National Chi Nan University ■ National Taipei University
THAILAND	■ King Mongkut's Institute of Technology Ladkrabang ■ The College of Music, Mahidol University

### Oceania

AUSTRALIA	■ Curtin University ■ Western Sydney University
-----------	--

### North America

CANADA	■ St. Francis Xavier University
MEXICO	■ Universidad Panamericana
USA	■ Augsburg University ■ College of St. Scholastica ■ Hamline University ■ Southern Oregon University ■ State University of New York at Oswego ■ The University of New Mexico ■ University of Massachusetts Dartmouth ■ Warren Wilson College ■ Westminster College

### EURASIA

AZERBAIJAN	■ ADA University
------------	------------------

### Europe

BELGIUM	■ Ghent University, Faculty of Arts & Philosophy, Faculty of Political & Social Sciences
CROATIA	■ University of Rijeka
DENMARK	■ Aalborg University, Faculty of Humanities ■ University of Southern Denmark, Faculty of Business and Social Sciences
FINLAND	■ Tampere University of Applied Sciences
FRANCE	■ IÉSEG School of Management ■ Les Facultés de l'Université Catholique de Lille ■ Sciences Po Lille
GERMANY	■ Constructor University Bremen ■ Hamburg University of Applied Sciences ■ Ludwigshafen University of Business and Society University of Applied Sciences ■ Technical University of Applied Sciences Würzburg-Schweinfurt ■ University of Duisburg-Essen, Faculty of Social Sciences
ICELAND	■ Iceland Academy of the Arts, Department of Music
ITALY	■ The American University of Rome
LITHUANIA	■ LCC International University ■ Mykolas Romeris University ■ Vilnius University
NETHERLANDS	■ Amsterdam University of Applied Sciences, School of Economics and Management ■ Erasmus University College ■ University College Utrecht
NORWAY	■ Norwegian University of Science and Technology ■ UiT The Arctic University of Norway ■ University of Bergen ■ Volda University College
ROMANIA	■ Romanian-American University ■ West University of Timisoara
SPAIN	■ University of Malaga
UNITED KINGDOM	■ University of Aberdeen

# STUDENT LIFE



## Talk to our students

You can chat online with our Student Ambassadors about life at iCLA.

*Being an iCLA student means living and studying in a place like no other. With state-of-the-art facilities, on-campus accommodation, and a vibrant campus life with many clubs, societies and events, your time here should be exceptional.*

### Accommodation

Our comfortable and affordable on-campus student accommodation is available to all our Japanese and international students. Living in iCLA's residence halls means being a part of a true cross-cultural community where global friendships are born. Our accommodation is designed so you can find a balance between privacy and social life that best suits your own lifestyle. All students have individual private bedrooms, with eight rooms sharing a common area, a mini kitchen, shower rooms, and toilets.

### Campus Facilities

iCLA also has its own spacious cafeteria where students enrolled in our meal plan can enjoy nutritious and delicious meals served three times a day on class days. In our Language Acquisition Center (LAC) there are computers and various digital materials to assist with individual language learning, and our students also have access to an extensive library of English and Japanese language books and multimedia materials.

The iCLA building also includes a student lounge, a martial arts dojo, a music studio, an art studio, a data science laboratory, a traditional tatami room, and numerous study spaces for individual or group study. As a YGU student you also have access to all the student lounges, cafes and libraries on campus as well as access to the fully equipped gym at no extra cost.

### Clubs and Societies

As you would expect from a university that counts over 80 Olympians among its alumni, there are plenty of competitive sports teams you can try out for. We also have a wide range of more casual sports and arts-related student-led university clubs and societies, and international students are highly encouraged to join. In total, we have over 55 clubs and societies to choose from!

### Events

Many on-campus events are held throughout the academic year. Special highlights of the year are the winter and summer galas and the university-wide school festivals. Our students also have the opportunity to volunteer at cultural exchange events in the local community. We encourage students to get involved in events, they are a great chance for you to express your creativity and grow your leadership skills, while being a fun way to engage with the student community.

### Part-Time Work

A part-time job in Japan can help you gain a head start on working experience and understanding Japanese workplace culture. There are opportunities off-campus if you are looking to work part-time while studying. As an international student, you can work part-time up to 28 hours a week once you have received a permit from the Immigration Services Agency of Japan.



# CAREER SUPPORT



**90%**  
graduate placement rate\*

\*2025 graduating class in employment or postgraduate studies, respondents to iCLA's April 2026 graduate survey

*Providing you with the skills and knowledge to build your future career and preparing you for long-term success is one of our highest priorities. Our faculty and staff provide close support to all students looking to explore their career prospects and expand their professional networks.*

Regular career seminars, one-on-one career consultations, mock interviews and document reviews are all available to our students throughout their degree. Career support professionals from the university offer a series of "Working in Japan" seminars designed to guide you through your career journey, starting from your first year. These seminars will not only help you develop skills and knowledge needed for job hunting, but they will also enable you to gain a deeper understanding of your strengths, skills, and career interests.

We also hold "Hirukatsu" lunch time exchange meetings, where current students can learn first-hand about the job-hunting experience both in Japan and abroad from business leaders and YGU Alumni. In these sessions students receive information on finding internship opportunities, and pick up valuable tips, advice and networking opportunities from CEOs, HR personnel, and our own graduates.

Building on the critical, creative, independent and global mindset fostered at iCLA, you can leverage these resources to identify what career you want

to pursue, as well as the steps to achieving that career goal.

iCLA also supports our students in finding internship opportunities. By participating in an internship, you can gain practical experience relevant to your interests and future career ambitions. We have strong and varied connections with companies, organizations, and employment agencies, which allows us to introduce our students to a variety of internship opportunities.

iCLA graduates have gone on to work for such prestigious companies as: Accenture, Activision Blizzard, Goldman Sachs, Huawei, Societe Generale, Mizuho Bank, Thomson Reuters, Mitsubishi Fuso, Mandarin Oriental, Chateraise, Rakuten, HIS, and Kering. Others have found positions in NPOs, the Military, Police, Local Government and Embassies. They have also gone on to study master's degrees at top global universities such as the University of Oxford, University of Sheffield, Georgia Institute of Technology, Vrije Universiteit Amsterdam, Hult International Business School, and ISEG Institute of Economics and Management.

## CAREER SUPPORT FLOW CHART

1st Year	2nd Year	3rd Year	4th Year
Information sessions about "Job hunting in Japan" Mock Interviews & Career Counseling		Job Hunting Support Program & Seminar for International Students	Job Hunting Walk-in & Q&A Sessions
	Consultation Sessions (year-around) Career Interviews (once per semester)		
	"Hirukatsu" to interact with alumni and industry professionals		
		Joint Company Information Sessions & Career Forums	
	Internship Guidance & Preparations Sessions Internship Programs (Aug. & Jan. to Mar.)		



### Hue, Vietnam

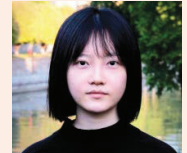
*iCLA truly supported me in discovering my dream career in finance. iCLA's curriculum covers a wide range of subjects from economics to performing arts. Through exploring those courses, I was able to discover my interest in my chosen career. Moreover, the professors, students (including exchange-students), and admin staff are always willing to talk and share their academic and professional experiences. These interactions helped me understand better the real aspects of working life. Studying at iCLA taught me how to find my passion, suitable jobs that fit with that and how to prepare to earn those jobs. My Economics professors also helped me assess the companies I wanted to apply to and find out further information about them. Their advice has been*

*invaluable. In addition to my first internship at FUSO Academy, part of Mitsubishi Fuso Truck and Bus Corporation, my second internship at Aristagora Financial Advisors really helped to shape my career path. My professors supported me in evaluating this opportunity and preparing for my interview. After starting their internship program, I was quickly taught plenty of useful skills and professional knowledge. Aristagora is a boutique financial firm, so I was able to challenge myself with many different tasks. I could see myself maturing at work every day. Moreover, the firm offered me an international environment, which allowed me to apply and enhance the social skills I had learned at iCLA.*

### Yueying, China

*I could not feel more fortunate to have been able to study Political Science at iCLA. My interest in it was originally ignited in the first Political Science debate I attended at iCLA. Looking back on my academic studies, I am genuinely grateful to have met the fantastic professors here, who offered valuable insights into my academic concerns and generous help with both my research and master's applications. Studying Political Science at iCLA enhanced my critical thinking ability, preventing me from giving opinions*

*readily before doing any credible analysis. Also, the comprehensive program of liberal arts equipped me with the necessary skills in both academic writing and logical thinking, preparing me well for the graduate offers I've received from both London School of Economics and Oxford University. After graduating from Oxford, I plan to stay in the field and proceed to doctoral studies. I hope one day I will be able to work again with the professors I met at iCLA.*



### Takaaki, Japan

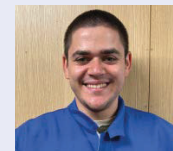
*The language proficiency and cultural understanding I nurtured at iCLA have been immensely beneficial in my workplace, particularly due to the diverse international composition of our staff. My fundamental motivation to work in equities stemmed from curiosity about finance and its impact on the world, beyond just the political aspects highlighted in newspaper columns. Recognizing the pivotal role finance plays in people's lives, I became passionate about enhancing my financial literacy to provide access to investment opportunities for people*

*from all walks of life, both locally and internationally. This led me to pursue employment in an investment bank operating on large scale, where I believed its influence could make a more profound impact within the market. In both Japanese and international job markets for recent graduates, technical skills specific to Japan are often not prerequisites. Thus, meticulous preparation, coupled with a coherent career vision and high motivation, are the pivotal factors in securing a position here.*

### Nanaho, Japan

*I work in the international product planning division of Chateraise, managing the rollout of products we bring to overseas markets. Chateraise is a Yamanashi based sweets company that is growing rapidly both here and abroad, so there's a lot of opportunities and various skills*

*to be gained working here. iCLA taught me to think from various perspectives which has been helping me a lot, as we often need to consider things from the perspective of our customers, store staff, factories, and the company as a whole.*



### Daniel, Bulgaria

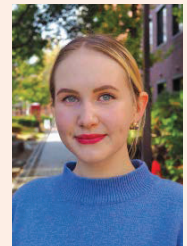
*After searching numerous career forums, I found my job as a Project Engineer with Endress+Hauser Yamanashi through a career forum in Kofu. I believe that choosing subjects from all of iCLAs majors helps me in some ways at my work - for example taking finance courses, design courses and especially the programming courses that iCLA offers. Searching for a job as a foreigner in Japan*

*can be quite challenging, however, persistence and strong will is the key. Be proactive and never give up. I would advise people to study Japanese and dive deep into the culture because if you do that, you'll show a very positive side to employers. Combined with persistence and never giving up, it'll give you good chances into succeeding in whatever you have set as a goal for yourself.*

### Liina, Finland

*My time at iCLA allowed me to explore various subjects in many different areas and helped to determine my post-graduation focus. I majored in Global Business and Economics, and after my third year of studies I had the opportunity to put my acquired knowledge into practice during an internship at Bosch Japan in their Software Sales department. During my three months there, I applied and strengthened the diverse range of skills I'd learned from my professors, from conducting competitor analysis to product development including financial modeling. Currently, I am employed at a renewable energy company in Tokyo, as part of a newly established data intelligence team. Before my third year of university, I had next to zero*

*knowledge about Data Science, but I quickly became fascinated by the immense potential it held. I wanted to take advantage of every Data Science course offered at iCLA and ended up completing them all. I use the skills I acquired, particularly in Python Programming and Machine Learning, every day in my role as a data analyst specializing in wind and solar energy. Additionally, thanks to the excellent Japanese language courses offered at iCLA, I acquired a proficient level of Japanese, enabling me to confidently participate in meetings and deliver presentations to my Japanese colleagues.*



# HOW TO APPLY

iCLA welcomes students from diverse educational backgrounds. We have two intakes per year, giving students the flexibility to join iCLA at a time that best suits their academic journey.

## Application Procedure

- Register using the online application system: [apply.icla.ygu.ac.jp](http://apply.icla.ygu.ac.jp)
- Fill out our online application form and upload all the required documents.
- Pay the application fee of JPY 7,000.

## Screening Method

Applications are evaluated based on a comprehensive review of all documents, including the Statement of Purpose and interview.

Please refer to iCLA's **2027 Application Guide** to learn more about the application and screening method.

## 2027 Application Schedule

Intake	Admission Category	Application Period	
		Starting Date	Closing Date
SPRING (APRIL) 2027	> Degree-seeking students > Transfer students <i>*applicants who need a student visa</i>	Wed. Apr 1, 2026	Wed. Nov 11, 2026
	> Degree-seeking students > Transfer students <i>*applicants who have a valid status of residence</i>		Fri. Jan 29, 2027
FALL (SEPTEMBER) 2027	> Degree-seeking students > Transfer students <i>*applicants who need a student visa</i>	Tues. Sep 1, 2026	Mon. Apr 12, 2027
	> Degree-seeking students > Transfer students <i>*applicants who have a valid status of residence</i>		Fri. May 28, 2027

Closing date is the final deadline for each intake. The entire admissions process (application through the notification of result) will usually be completed within a maximum of 40 days. The deadline for payment and enrollment procedures must be completed within a maximum of 1 month of receiving your offer in order to secure a place at iCLA. Please see our online application system for a detailed schedule of notification and enrollment dates.

\*Applicants who hold a valid status of residence defined as a Japanese passport, dual nationality, permanent residency, or special permanent resident certificate holder.

## Tuition and Other Fees (JPY)

Tuition and Other Fees	First Year	Second Year and Onwards
Enrollment Fee	200,000	-
Tuition Fees	1,696,000	1,696,000
Total	1,896,000	1,696,000

## Scholarships

Type	Amount of Exemption*	Selection Criteria
I	100%	> Academic Achievement
II	75%	
III	50%	> Extracurricular Achievements
IV	25%	
V	10%	> Financial Need

Renewable every year based on GPA and overall performance. Maximum of 4 years.

\*Scholarship covers enrollment and tuition fees. It does not include room, utilities & miscellaneous fees, meal plan and other living expenses.

## Room and Meal Plan Fees (JPY)

Room and Meal Plan	Fee
Room and Utilities*	650,000/year
Meal Plan	Approx. 350,000/year (3 meals/day)

All students are required to live in the iCLA residence halls in their first year at iCLA. Meals are only served on class days.

\*Water, gas, electricity, maintenance (including common area).



### For more details

visit [www.icla.ygu.ac.jp](http://www.icla.ygu.ac.jp) or contact the Admissions Office directly at [i.admission@c2c.ac.jp](mailto:i.admission@c2c.ac.jp).



## WHAT HAPPENS NEXT?

1

### ANNOUNCEMENT OF RESULTS

Applicants will be contacted through the email address indicated on their online application form. Scholarship offers will also be sent out.

2

### OFFER ACCEPTANCE AND PAYMENT OF FEES

Log in to the online application system and accept your offer. Pay the enrollment, tuition, and other fees by the indicated deadline. Fill out and send all required enrollment documents to the Admissions Office. The documents must arrive by the specified deadline.

3

### STUDENT VISA APPLICATION

iCLA applies for your Certificate of Eligibility (CoE) at the Immigration Bureau of Japan. Once your CoE is issued, your CoE will be sent to you. Visit an Embassy or Consulate of Japan with the CoE to apply for your student visa to enter Japan.

4

### ACCOMMODATION ARRANGEMENT

Fill out the Pre-Departure Forms and after your application details are confirmed by our Student Affairs Team, the invoice for room and meal plan fees will be sent to you. These fees need to be paid before your arrival in Japan.

5

### DEPARTURE PREPARATION

Receive your student visa from the Japanese Embassy, Consulate-General or Consulate Office and begin your preparation to come to iCLA.

6

### ARRIVAL AT ICLA & CHECK-IN

This is the start of your iCLA adventure! Staff and students will help you move into student accommodation and show you around the Yamanashi Gakuin University campus.

7

### ORIENTATION

Orientation Week will be held to help new students settle into iCLA and meet the rest of the academic community.