

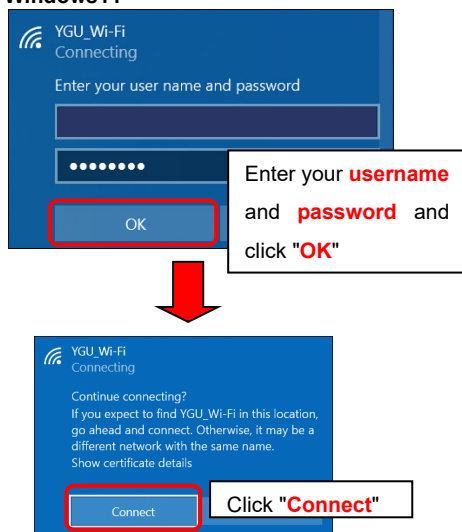
How to use YGU Wi-Fi

YGU Wi-Fi is a Campus Wi-Fi service usable by member of students, faculty and staff on YGU. This service is usable for all kinds of Wi-Fi enabled devices: laptops, smartphones and tablets etc.

Steps required to setup YGU Wi-Fi

- ① Enable Wi-Fi on your device.
- ② Among available wireless networks, select "**YGU_Wi-Fi**".
- ③ Enter your **Integrated Authentication ID username** and **password** to connect to YGU Wi-Fi.

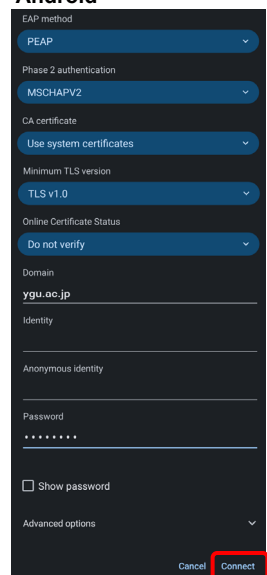
Windows11



iPhone (iOS)



Android



- ④ You will be able to use the internet.

Items to note

- EAP method : PEAP
 - Phase 2 authentication : MSCHAPv2
 - CACertificate : **Use system certificates**
 - Minimum TLS Version : **TLS v1.0**
* Selection of TLS Version is for Android15 and above.
 - Online Certificate Status : **Do not verify**
 - Domain : **ygu.ac.jp**
 - Identity : **username**
 - Anonymous Identity : Blank
 - **Password**
- Finally tap "**CONNECT**".

Automatically connected to YGU Wi-Fi from next time.

【Notes】

■Available Network Devices

Laptops, tablets, smartphones, music players etc. (Both for YGU-owned and private devices)

Note: In case your device is using obsolete Wi-Fi standards, it's possible that it cannot connect to YGU Wi-Fi.

■Available Locations

University Lecture Buildings: No.9, 12, 16, 40, iCLA Building, Sports Science Building and Graduate School Building.

Junior College Lecture Buildings: No.21, 45, 51 and Southern Tower.

Other Locations: General Library, Crystal Tower, College Sports Center, Confucius Building, Campus Center Building, Cafeteria (Prussian Blue), Student Lounge "Y", Gymnasium (Furuya Anniversary Hall), 40th Anniversary Hall, Sport Science Lab, Senior High School, Junior High School, Elementary School and Kindergarten etc.

Note: Depending on the structure of the buildings, there are locations where Wi-Fi radiowaves do not reach.

■Other Notes

- **Please do not send and receive sensitive data including personal information data in the YGU Wi-Fi, as the connection is not secure.**
- You cannot use networked devices on campus from the YGU Wi-Fi. And you cannot also use other than browsing websites. (eg: Network printers, User folder, Shared Folder, FTP connect, P2P connect.)
- Please you setup the YGU Wi-Fi configuration (registration of network key) in advance.
- **Please do not give your username or password to others. They are for your personal use only.**
Please make sure that your username and password will not fall into wrong hands.
- Please refrain from occupying large amounts of bandwidth of network and consideration for other users. (eg: sending and receiving of large volumes of data, the simultaneous connection of multiple devices.)

■Contact us

Information Technology Center (IT Office)

Location: 40th Anniversary Hall, 5th floor

E-mail: it-contacts@c2c.ac.jp